



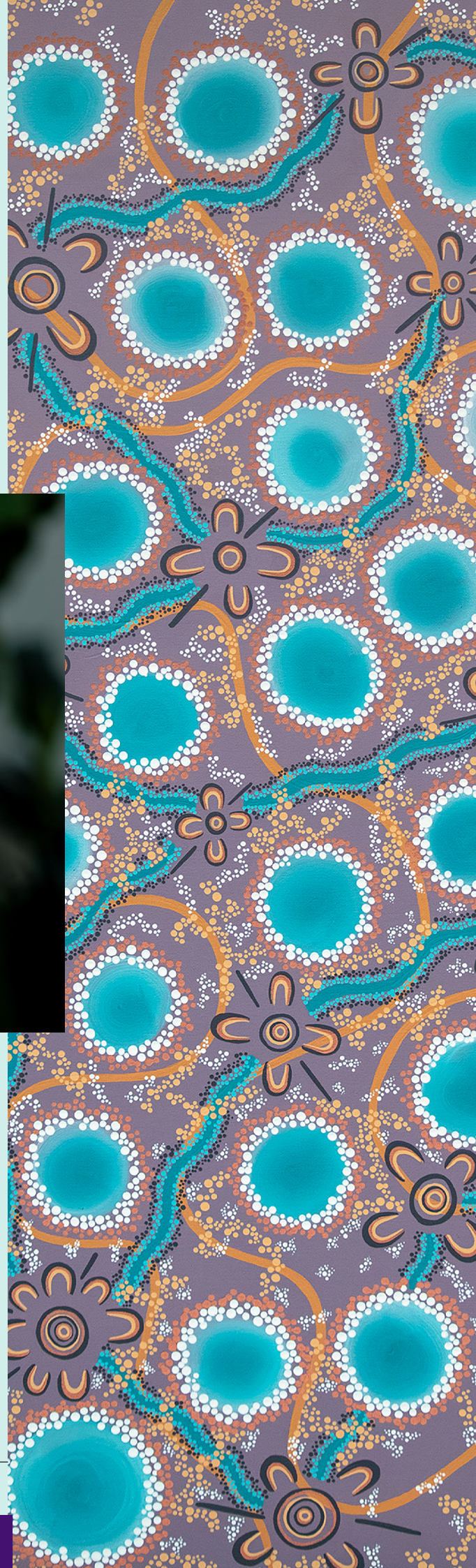
Allied Health Careers for Aboriginal People



Find a career in an innovative health system focussed on patient first outcomes

A wide range of exciting career options are available in the NSW public health sector. A career in allied health provides many unique opportunities and opens doors to some fantastic experiences. If you are considering a career in allied health, then take the time to explore the options on offer.

The team enriching health
in millions of ways every day





Help deliver outcomes that matter most to our community. A career in allied health provides unique opportunities and experiences

Opportunities NSW Health offers in these allied health professions:

| | | |
|---------------------|-----------------------------|---------------------------|
| Art Therapy | Medical Radiation Therapy | Social Work |
| Audiology | Nuclear Medicine Technology | Speech Pathology |
| Child Life Therapy | Orthoptics | Music Therapy |
| Counselling | Pharmacy | Occupational Therapy |
| Dietetics | Podiatry Psychology | Orthotics and Prosthetics |
| Diversional Therapy | Radiography | Physiotherapy |
| Exercise Physiology | Sexual Assault | Welfare Work |
| Genetic Counselling | | |

Cadetship overview

The NSW Aboriginal Allied Health Cadetship program offers paid work placements, financial and cultural support to Aboriginal students undertaking full time study in an eligible undergraduate or postgraduate allied health course. Cadets are employed by a NSW Health local health district or specialty health network for the duration of the program.

The cadetship aims to:

- Increase the number of Aboriginal people working in the allied health professions across the NSW public health sector.
- Provide an opportunity for NSW Health's local health districts and specialty health networks to assist in improving Aboriginal health through education and employment.

Cadetship program

The program offers:

- The opportunity to work in a local health district or specialty health network in a range of settings such as hospitals, outpatient clinics and community while completing allied health studies.

- An income while studying.
- Support and mentoring by professionals (both Aboriginal and non-Aboriginal) working within the health setting.
- The opportunity to experience firsthand employment in a health facility and develop cultural and allied health networks.

Eligibility

To be eligible for a cadetship, a person must:

- Be of Australian Aboriginal and/or Torres Strait Islander descent; and
- Identify as an Aboriginal and/or Torres Strait Islander person; and
- Be enrolled in the final two years of full-time study in an eligible allied health profession at a university located in NSW that leads to professional registration, or eligibility for membership, as an allied health professional with a relevant professional association; and
- A resident of NSW.

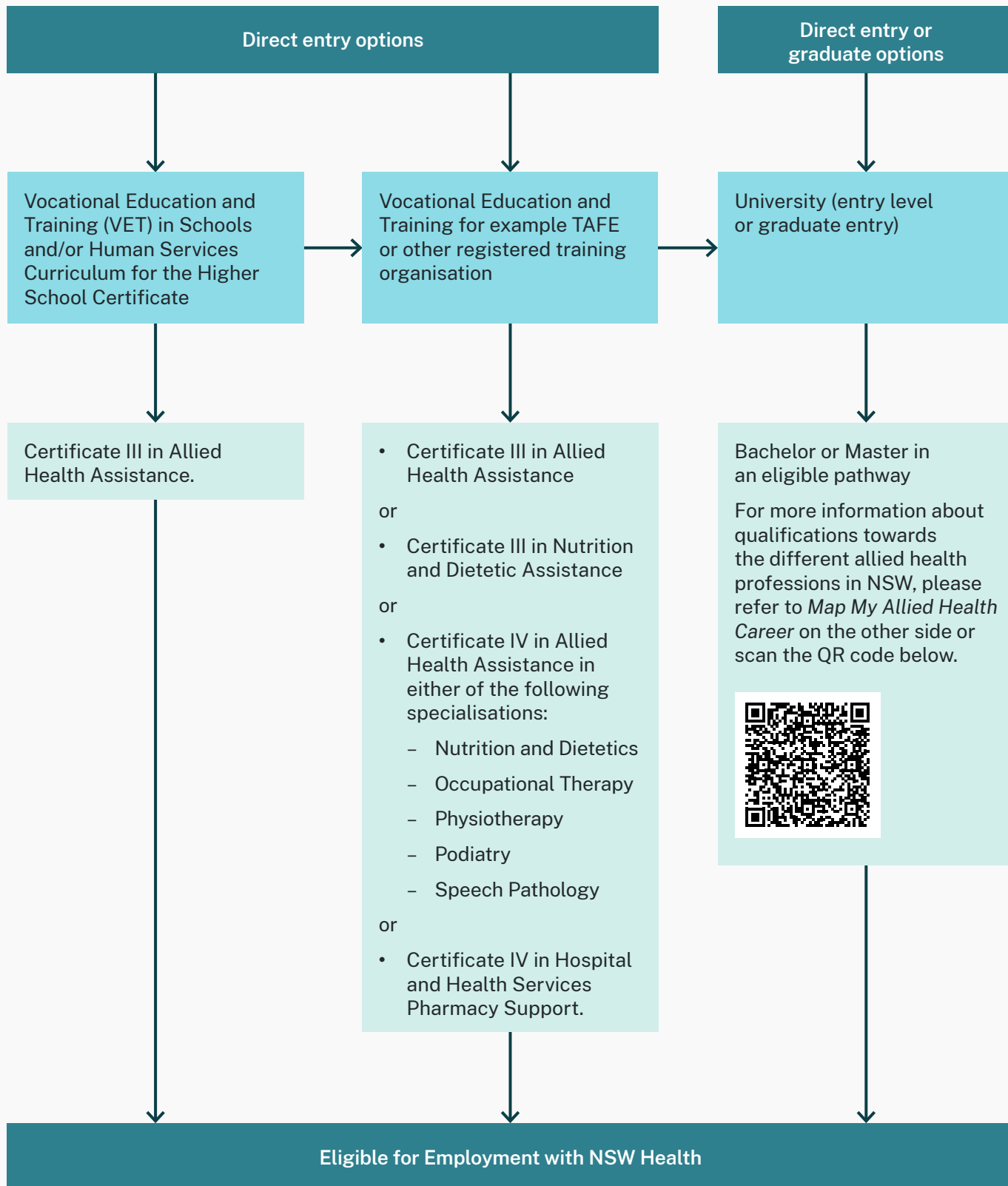


For more information email MOH-Cadetship@health.nsw.gov.au, scan the QR code or visit www.health.nsw.gov.au/aboriginal-allied-health-cadetship



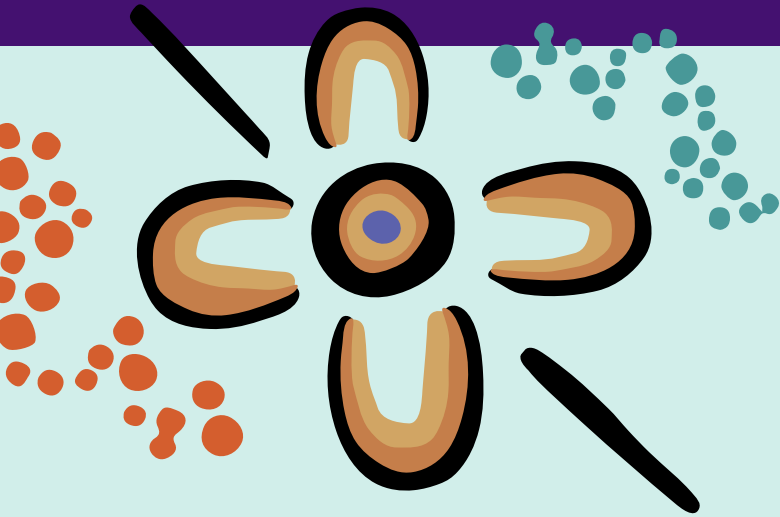
The Career Pathway Map

The map outlines choices that you can take to get into an Allied Health course



*Differences in pathway may exist between universities.

Allied Health Careers for Aboriginal People



Allied Health scholarships

As part of its ongoing commitment to maintain and improve the health status of rural communities, NSW Health provides financial assistance to allied health students via the NSW Rural Allied Health Scholarships, NSW Rural Allied Health Clinical Placement Grants and NSW Rural Allied Health Postgraduate Scholarships.

NSW Health also provides scholarships specifically through the Australian Rotary Health for Aboriginal Medical and Allied Health Scholarships.



Map My Allied Health Career

Explore career development opportunities you can only find in a health organisation of our size and scale.

Map My Allied Health Career can help you find out about:

- the training you need
- relevant courses
- where you can study in NSW. You can also find information on what a typical workday is like if you become an allied health professional.



Scan the QR code or visit www.mapmycareer.health.nsw.gov.au to find out more.



Scan the QR code to apply now.

For more information email MOH-Cadetship@health.nsw.gov.au, or visit www.health.nsw.gov.au/aboriginal-allied-health-cadetship

November 2024 © NSW Health. SHPN (WPTD) 240799..

