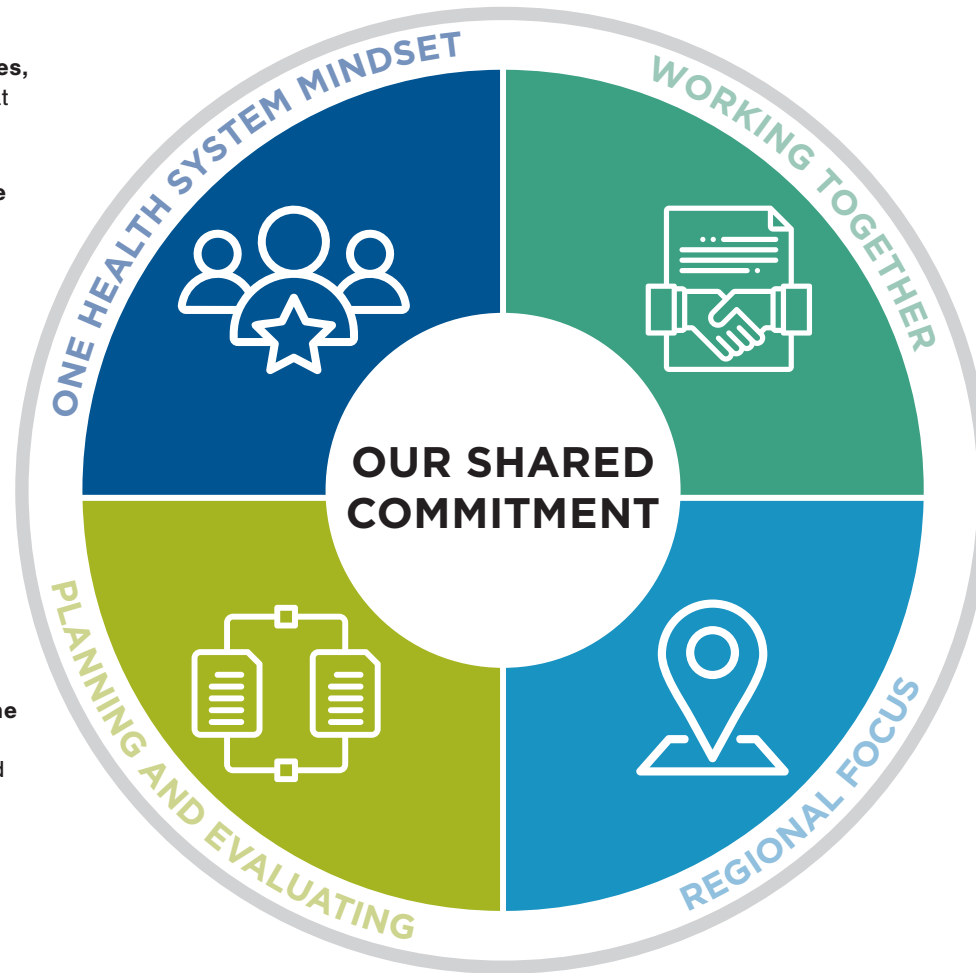


## A one health system mindset which supports us to think and act beyond our current healthcare structures and boundaries in healthcare.

- Working as one health system means our **policies, planning and service delivery** put the person at the centre so that they experience their care as coming from the same system.
- Collaborate across the **different settings of care** and enable care provision in the community
- **Investment** in social infrastructure, healthy lifestyles, health prevention and community development
- Removing the **structures and barriers** that reinforce silos

## Planning and evaluating our actions to improve healthcare experiences, population health outcomes and health system cost efficiency.

- Our approach of a **regional focus backed by the right system supports** means that we plan and evaluate our actions together at the regional and at the system level through the Quadruple Aim:
  - **Caring** for the carer
  - Improve **health outcomes** for the population
  - Improve **cost efficiency** of the health system
  - Improving the **patient experience** of care (including quality and satisfaction)



## Working together with shared principles and shared focus areas to address shared challenges.

- **Engaging, involving and empowering communities** to participate, and valuing the community voice
- Investing in **building our relationships**
- Valuing each other's **perspectives**
- Building the **right leadership** capability
- Thinking as **one workforce**
- Enabling **care** in the community
- Commissioning in **collaboration**
- Developing **shared models** of care
- **Reducing** duplication
- Enhancing **digital approaches**

## A regional focus for planning, commissioning, designing and delivering healthcare backed by the right system support from the State and the Commonwealth.

- Regional stakeholders in the **design and delivery** of healthcare
- Actively working together to jointly plan, problem solve, and design **shared care models** will enable the development of strong partnerships
- **Pooling of resources** is most effective when used to address specific needs in a locality, cohort or co-morbidity

To ensure the successful outputs of the Joint Statement, working groups will be created with responsibility of delivering key priorities. These working groups will be overseen by a newly created Joint Statement Steering Committee (JSSC). The purpose of the JSSC is to provide an advisory and leadership role to the working groups.

