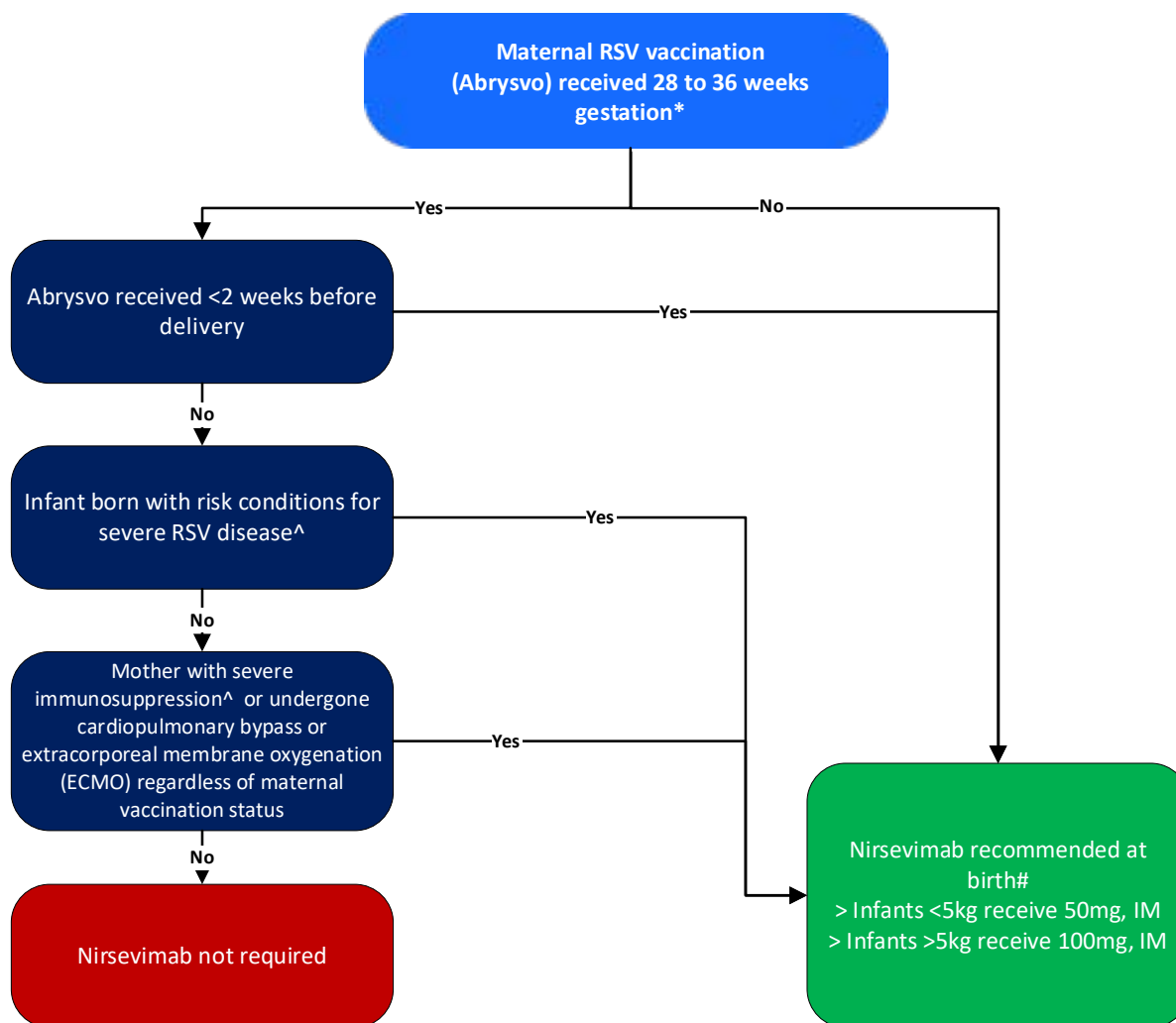


Clinical decision aid for nirsevimab (Beyfortus™) in newborn infants

NSW RSV Prevention Program

Decision aid to determine if a **newborn infant** is eligible to receive nirsevimab.



*Check maternal RSV vaccination status on the Australian Immunisation Register

^Refer to the NSW RSV prevention program eligibility information

#The dose of nirsevimab for infants weighing <5 kg, born during or entering their 1st RSV season, is 50 mg (0.5 mL). The dose of nirsevimab for infants weighing ≥5 kg, born during or entering their 1st RSV season, is 100 mg (1 mL). Nirsevimab is administered by intramuscular injection.